



**UNDERBRIDGE
INSPECTION UNITS
ROAD-RAIL UNITS
TUNNEL
INSPECTION UNITS**

Underbridge Inspection Unit MBI 70-1/S

Trailer unit

Max. horiz. outreach below construction	7.00 m
Width of platform (basic/telescopic)	1.00/0.90 m
Max. lowering depth	5.50 m
Max. vertical overbridging (noise barrier)	1.80 m
Max. horizontal overbridging	1.20–1.40m
Max. load on platform (incl. equipment)	400 kg
Max. load on telescopic platform	200 kg
Rotation area of platform	180°
Space required on bridge	2.60–2.80 m

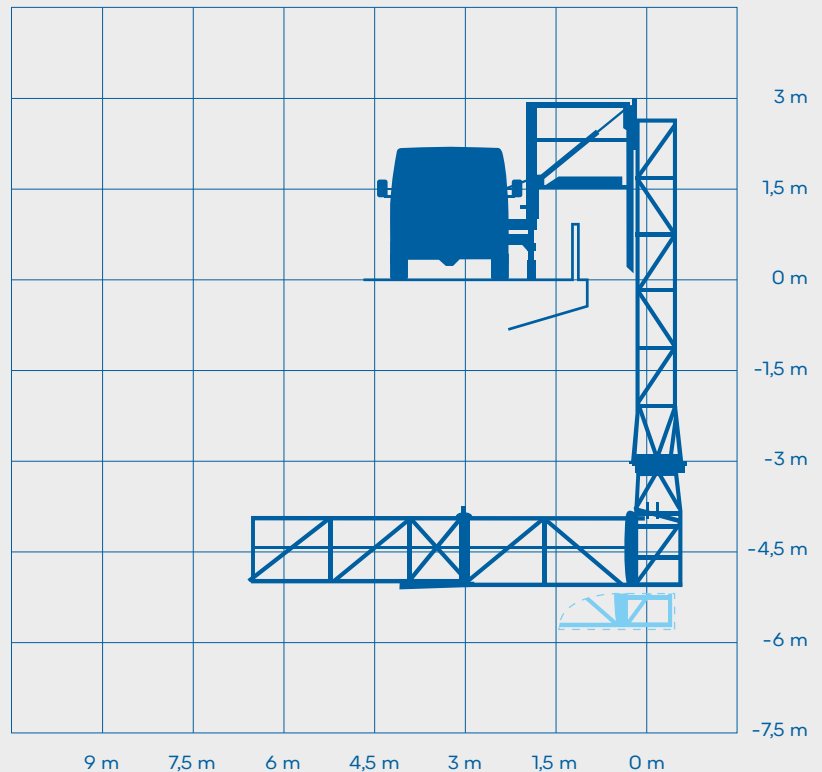
Equipment on platform

Power outlet 220 V

Dry weight	3,800 kg
Total length	8.10 m
Total width	2.30 m
Total height	3.50 m

Gasoline power unit

Permissible up to max. wind speed of 12.5 m/s.



Underbridge Inspection Unit MBI 90-1/S

Self-propelled working unit

Max. horiz. outreach below construction	9.00 m
Width of platform (basic/telescopic)	1.00/0.90 m
Max. lowering depth	6.50 m
Max. vertical overbridging (noise-barrier)	2.40 m
Max. horizontal overbridging (sidewalks)	2.00–2.20 m*
Max. load on platform (incl. equipment)	450 kg
Max. load on telescopic platform	225 kg
Rotation area of platform	180°
Space required on bridge	2.45 m

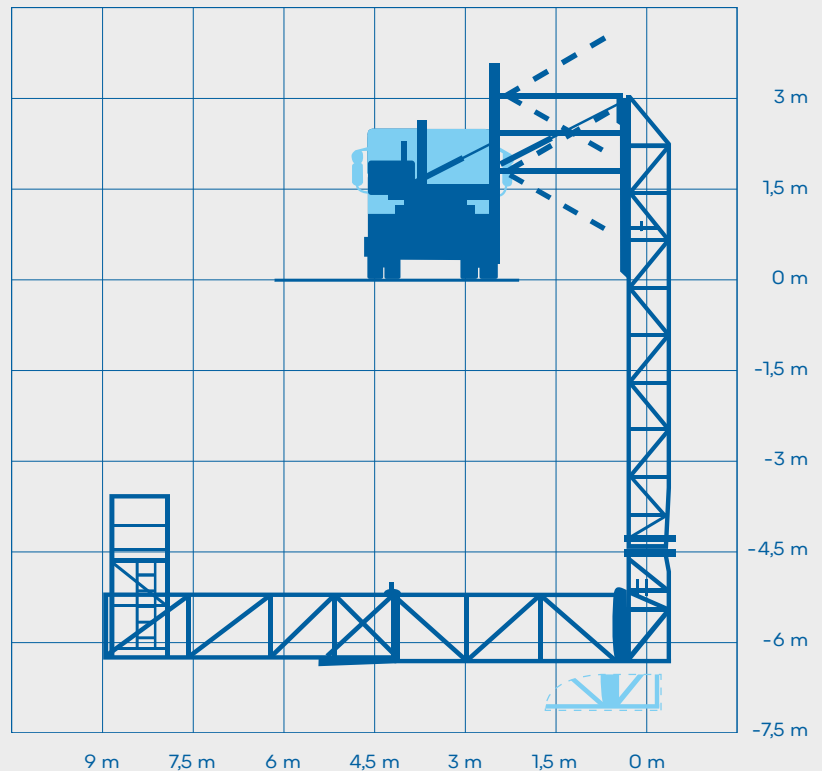
Equipment on platform

Power outlet 220 V, 1 scaffold,
video-controlled platform*

Dry weight	9,600 – 10,800 kg*
Total length	9.50 m
Total width	2.45 m
Total height	3.80 – 3.90 m*

Gasoline power unit, rear view camera*

Permissible up to max. wind speed of 12.5 – 14 m/s*.



*as per construction

Underbridge Inspection Unit MBI 150-1,7/S

Semi-trailer

Max. horiz. outreach below constr.	15.00 (18.00) m
Width of platform (basic/telescopic)	1.70/1.60 m
Max. lowering depth	9.00 m
Max. vertical overbridging (noise barrier)	2.50 m
Max. horizontal overbridging	2.50 m
Max. load on platform (incl. equipment)	800 kg
Max. load on telescopic platform	400 kg
Rotation area of platform	180°
Space required on bridge	2.60 m

Equipment on platform

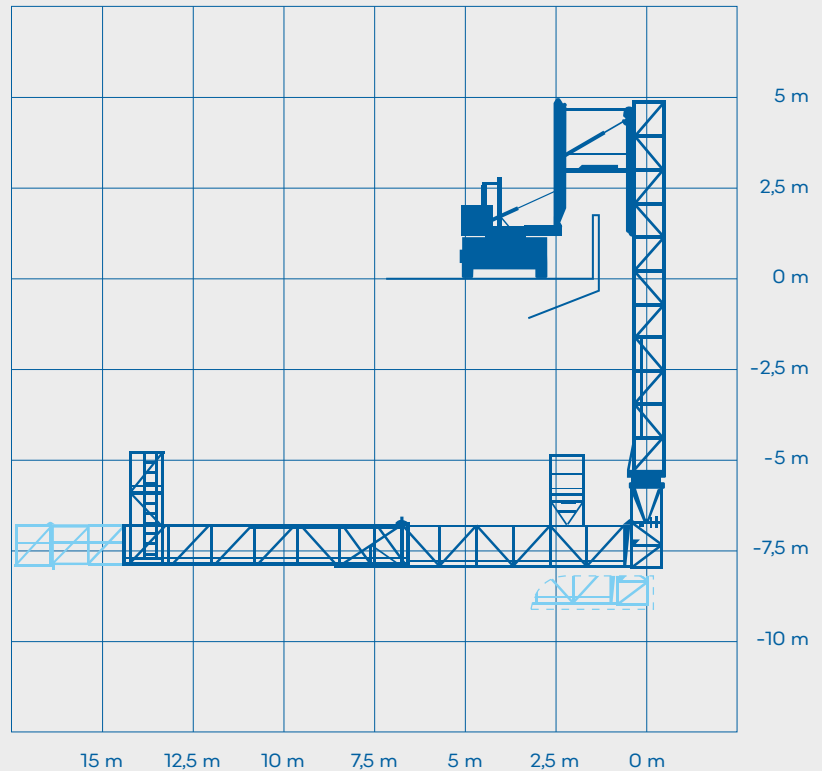
Power outlet 110 V, 2 scaffold

Dry weight	23,000 kg
Total length (semi-trailer/trailer-truck)	13.00/16.50 m
Total width	2.55 m
Total height	4.00 m

Diesel power unit 18 KVA

easy of use, ideal for self-propelled

Permissible up to max. wind speed of 12.5 m/s.



Underbridge Inspection Unit MBI 160-1,7/S

Self-propelled working unit

Max. horiz. outreach below construction	16.00 m
Width of platform (basic/telescopic)	1.70/1.60 m
Max. lowering depth	9.30/10.15 m
Max. vertical overbridging (noise-barrier)	4.00 m
Max. horizontal overbridging (sidewalk)	3.50–4.25 m*
Max. load on platform (incl. equipment)	800 kg
Max. load on telescopic platform	400 kg
Rotation area of platform	180°
Space required on bridge	2.85–3.10 m*

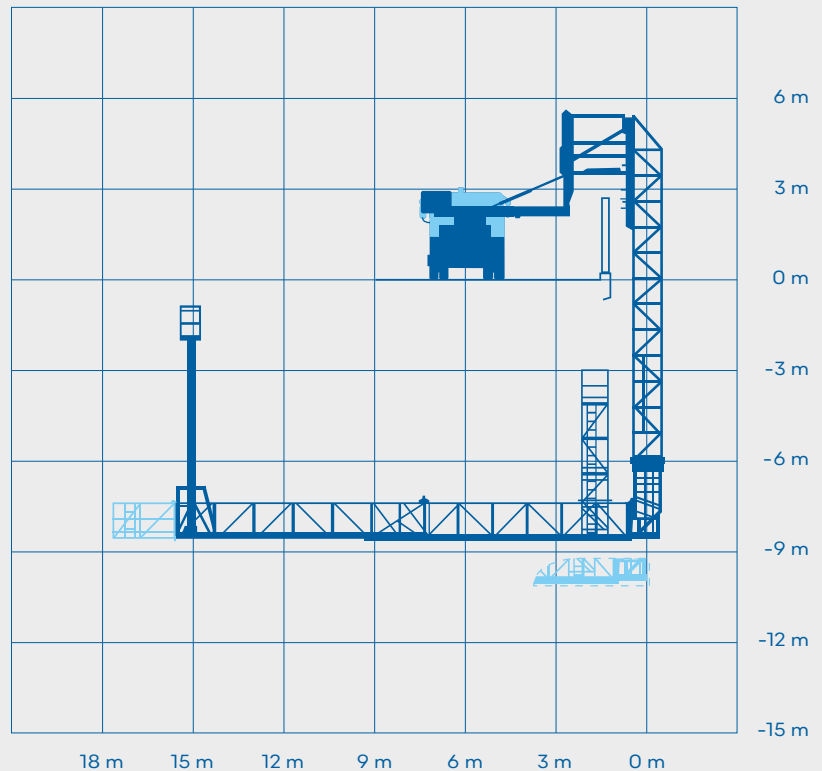
Equipment on platform

Power outlet 220 V/380 V,
1 hydraulic lift (8 m working height),
1 scaffold, video-controlled platform

Dry weight	35.500–38.500 kg*
Total length	12.00–13.60 m*
Total width	2.55 m
Total height	4.00 m

Diesel power unit, rear view camera*

Permissible up to max. wind speed of 12.5–14 m/s*.



*as per construction

Underbridge Inspection Unit MBI 250-1,5/S

Self-propelled working unit

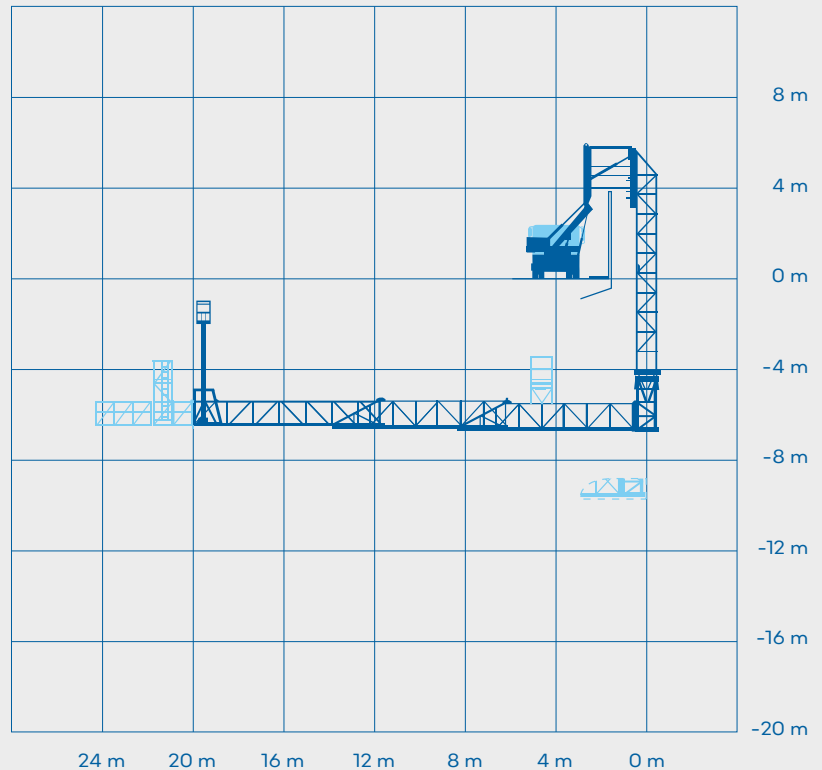
Max. horiz. outreach below construction	25.00 m
Width of platform (basic/telescopic)	1.50/0.90 m
Max. lowering depth	9.80 m
Max. vertical overbridging (noise barrier)	4.50 m
Max. horizontal overbridging	3.20 m
Max. load on platform (incl. equipment)	800 kg
Max. load on telescopic platform	400 kg
Rotation area of platform	180°
Space required on bridge	2.80 m

Equipment on platform

Power outlet 110 V, 1 hydraulic lift, 1 scaffold

Dry weight	40,000 kg
Total length	13.00 m
Total width	2.55 m
Total height	4.00 m

Diesel power unit 27 kVA, rear view camera,
Video-controlled platform, crane for pier inspection
Permissible up to max. wind speed of 12.5 m/s.



Underbridge Inspection Unit MBL 1.200T

Self-propelled working unit

Max. horiz. outreach below bridge	12.00 m
Max. lowering depth	15.50 m
Max. working height	16.00 m
Max. horizontal overbridging (sidewalk)	3.90 m
Rotation area	1×180°/1×270°
Space required on bridge	2.55 m
Basket dimensions	1.35×1.25 m
Max. load on basket	280 kg

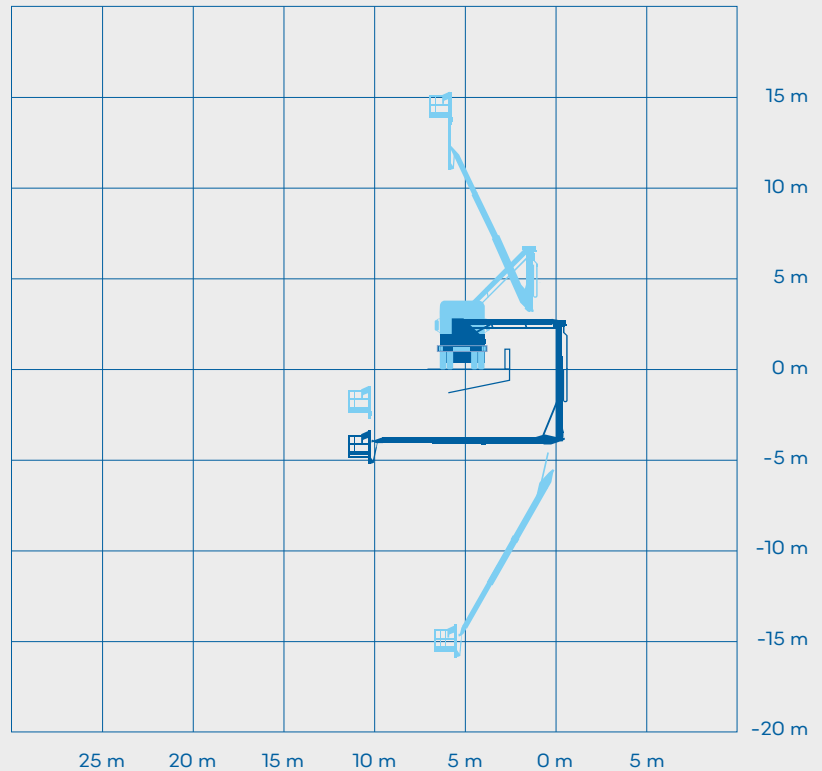
Equipment on basket

Power outlet 110 V, lighting for night work

Dry weight	23,700 kg
Total length	11.40 m
Total width	2.55 m
Total height	4.00 m

Power set, lighting on arm system, no struts

Permissible up to max. wind speed of 12.5 m/s.



Underbridge Inspection Unit MBL 1.300T

Self-propelled working unit

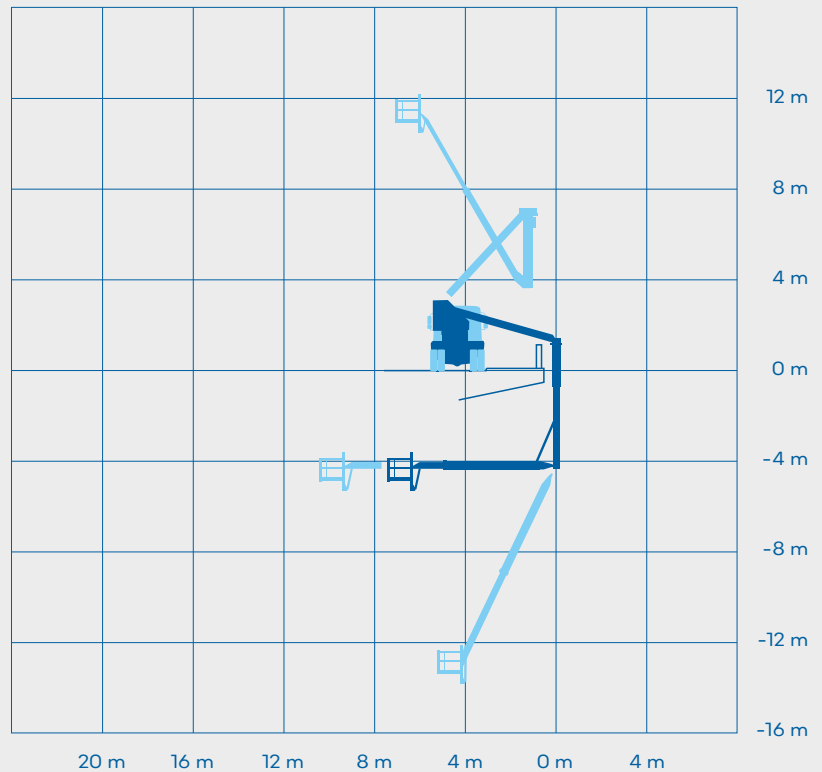
Max. horiz. outreach below bridge	11.50 m
Max. lowering depth	13.50 m
Max. working height	12.50 m
Max. horizontal overbridging (sidewalk)	3.65 m
Rotation area	2×180°
Space required on bridge	3.10 m
Basket dimensions	1.25×1.00 m
Max. load on basket	200 k

Equipment on basket

Power outlet 110 V, lighting for night work

Dry weight	18,000 kg
Total length	10.00 m
Total width	2.50 m
Total height	4.00 m

Power set, lighting on arm system, no struts



Permissible up to max. wind speed of 12.5 m/s.



We can supply, from our European hire centres, a diverse range of inspection equipment for both bridges and tunnels. Our fleet of equipment complies with the highest safety standards in Europe, enabling you to complete your bridge inspection in a safe and efficient manner.

From a lightweight towable unit, weighing only 2800 kg, to the MBI 250 with its massive 25 m under reach. Within our fleet we have machines that will give you an over reach from the side of the machine to the outside of the bridge parapet of 4.2 m. Also units that will reach over an acoustic barrier of 5.2 m.

With more than 20 years experience we provide equipment to the highest safety standards. They include full CCTV coverage and, on many units, both ultra sonic and infra red devices to assist in the most accurate positioning of the equipment on your inspection site.



WEMO-tec UK Ltd.
Scott Business Park
Haverton Hill Road
Stockton-on-Tees
TS23 1PY
Tel.: +44 1642 564044
info@wemo-tec.co.uk

www.wemo-tec.co.uk

WEMO-tec GmbH
Bürgermeister-Ebert-Straße 17
D-36124 Eichenzell
Tel.: +49 6659 86-0
Fax: +49 6659 86-999
info@wemo-tec.com

www.wemo-tec.com
www.wernergruppe.com